

Blue Line

Wet/Dry Vacuums

- for safer, cleaner and more productive job sites & facilities

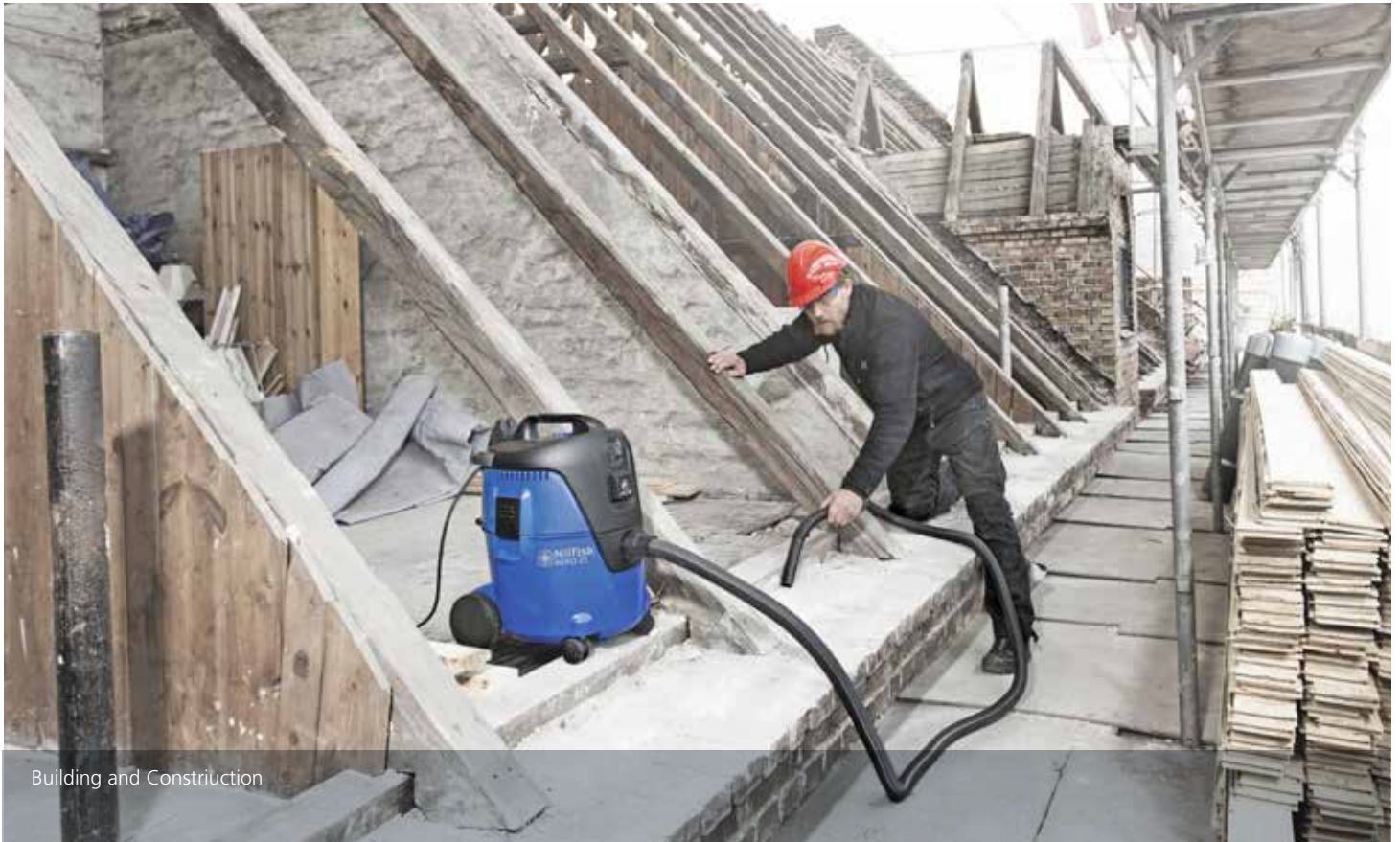




Automotive



General Facility Maintenance



Building and Construction

Vacuums that work as hard as you do.

For hands-on users in rugged applications, Nilfisk wet/dry vacuums deliver performance, efficiency and reliability as standard. Only Nilfisk is backed by more than a century of vacuum and filtration expertise, and offers many features and functions to meet your specific application needs.

- Push & Clean semi-automatic filter cleaning
- InfiniClean™ automatic filter cleaning
- Long-lasting washable PET filter
- Silent power
- Multiple capacities
- MultiFit accessory system
- Auto start for electric/pneumatic tools
- HEPA filtration

AERO Vacuums:

AERO compact wet/dry vacuums are engineered to bring long-lasting performance, industry-leading suction, low noise level, competitive pricing and ergonomic design. The new line ensures users safe operation, easy storage and transportation, and increased productivity.

ATTIX 30 & 50:

ATTIX wet/dry vacuums bring more power and capacity with durable, flexible design. For demanding users with a high frequency of cleaning, ATTIX delivers user-friendly operation and functional design to ensure better performance and reliability.

ATTIX 33 & 44:

ATTIX 33 & 44 wet/dry vacuums pack high suction power, provide optimal safety and maximum filtration, all while including several other user benefits designed to meet tough requirements in building & construction and other industries.



Sturdy grip for easy transportation and improved accessory storage and tool deposit.



Long-lasting, washable PET filter retains to 1.0 micron. HEPA filter optional.



Fleece bags available for easy clean-up of debris. Efficiency: 47.3% @ 0.3 micron (AERO), 99.5% (ATTIX).



Tilt the container to empty, or simply lift it out of the frame to dispense of its contents.



With a comfortable, integrated handle, it's easy to take the ATTIX 19 wherever you work.



Integrated container handle makes disposal and lifting easy and convenient on AERO 21 and 26 models.

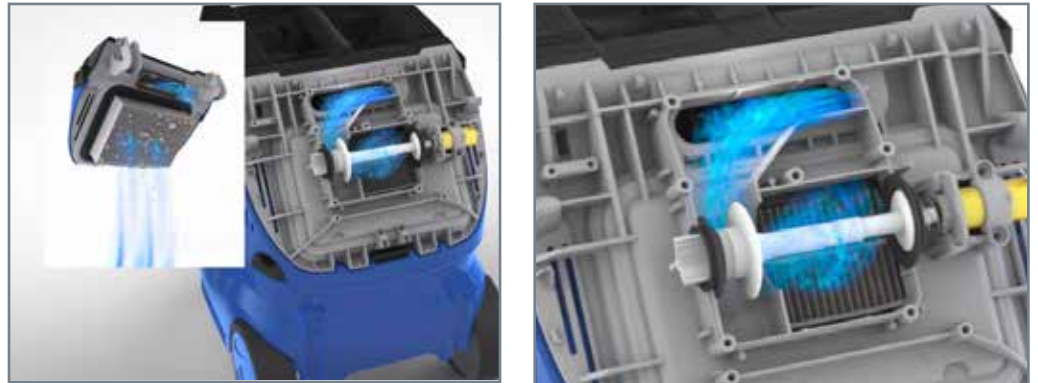
Filter Cleaning Technology

InfiniClean Automatic Filter Cleaning Technology:

Nilfisk InfiniClean system secures a continuously high suction performance and sealed airflow during operation.

A powerful reversed air pulse is activated every 15 seconds, keeping airflow on a high level, without having to shut off the machine, ensuring the filter is cleaned at every pulse.

A unique double-valve system minimizes performance drops during the cleaning cycle.

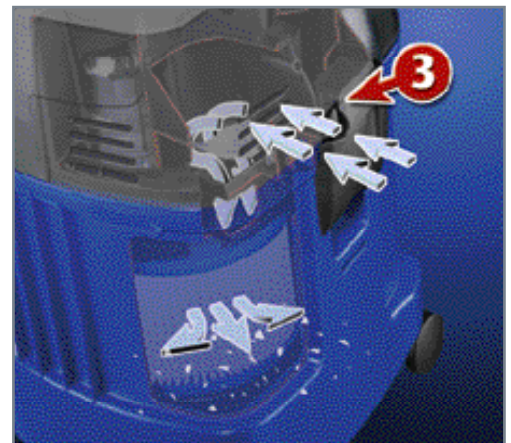


Push&Clean Fast and Simple Filter Cleaning:

If you work with fine dust, you are surely familiar with the dreaded task of cleaning clogged filter cartridges to restore normal suction performance.

With Push&Clean, all you have to do to clean the filter is block the inlet fitting or the hose, and push and release the filter cleaning button. The surrounding air enters into the container, passing through the filter cartridge in the opposite direction to clean the filter gently. Dirt is blasted off and high suction performance is restored—you are back to work in no time.

1. Block the hose inlet.
2. Push and release the button.
3. Air pulses in to clean the filter.



AERO Series



Technical Specifications

DESCRIPTION	UNIT	AERO 21-01 PC	AERO 21-01 PC INOX	AERO 26-21 PC	AERO 31-22 INOX
Part Number, standard machine	-	107406620	107406621	107406622	107406623
Part Number, HEPA standard machine	-	900140	900141	900142	900143
Voltage @ 60 Hz.	V	120	120	120	120
Power @ 60 Hz.	HP (W)	1.34 (1000)	1.34 (1000)	1.34 (1000)	1.34 (1000)
Air Flow, max.	CFM	127	127	127	127
Waterlift, max.	in. (mm) H ₂ O	84 (2133)	84 (2133)	84 (2133)	84 (2133)
Noise Level @ working distance of 3 m.	dB(A)	64	64	64	64
Container Capacity	gallons (L)	5 (20)	5 (20)	6.6 (25)	8 (30)
Dimensions	in x in x in (mm x mm x mm)	15 x 15 x 20 (381 x 381 x 508)	15 x 16 x 21 (381 x 483 x 533)	15 x 15.5 x 21 (381 x 394 x 533)	15 x 16 x 25 (381 x 483 x 635)
Shipping Weight	lb. (kg)	16.5 (7.5)	18.7 (8.5)	19.8 (9.0)	23.2 (10.5)
Electrical Approval	-	ETL-C	ETL-C	ETL-C	ETL-C

FEATURES

Filter Cleaning System	Push&Clean	Push&Clean	Push&Clean	Push&Clean	Push&Clean
Accessory/Tool Storage	●	●	●	●	●
Collection Container	Plastic	Stainless Steel	Plastic	Stainless Steel	Stainless Steel
Power Socket & Auto Start/Stop			●	●	●
Accessory Net			●	●	●
Rubber Strap for Hose Storage			●	●	●

ACCESSORIES

Hose	in. x ft.	● 1.25 x 11.5 (Part # 107409976)	● 1.25 x 11.5 (Part # 107409976)	● 1.25 x 11.5 (Part # 107409976)	● 1.25 x 11.5 (Part # 107409976)
Extension Tube (2 Pieces)		● Aluminium (Part # 107400032)	● Aluminium (Part # 107400032)	● Chrome Steel (Part # 302000529)	● Chrome Steel (Part # 302000529)
Floor Nozzle, wet/dry		● (Part # 107402706)	● (Part # 107402706)	● (Part # 107402706)	● (Part # 107402706)
Crevice Nozzle		● (Part # 29541)	● (Part # 29541)	● (Part # 29541)	● (Part # 29541)
Universal Nozzle		● (Part # 14295)	● (Part # 14295)	● (Part # 14295)	● (Part # 14295)
Tube Holder Kit		● (Part # 107409979)	● (Part # 107409979)	● (Part # 107409979)	● (Part # 107409979)
Washable Filter, PET		● (Part # 30200490)	● (Part # 30200490)	● (Part # 30200490)	● (Part # 30200490)
1 Dust Bag in Container, fleece		● (Part # 302002404)	● (Part # 302002404)	● (Part # 302002404)	● (Part # 302002404)
HEPA Filter *		○ (Part # 302001095)	○ (Part # 302001095)	○ (Part # 302001095)	○ (Part # 302001095)
Tool Adapter with Regulator		○ (Part # 107409977)	○ (Part # 107409977)	● (Part # 107409977)	● (Part # 107409977)
Suction Brush Nozzle		○ (Part # 302002509)	○ (Part # 302002509)	● (Part # 302002509)	● (Part # 302002509)
Soil Nozzle, switchable		○ (Part # 302002365)	○ (Part # 302002365)	○ (Part # 302002365)	○ (Part # 302002365)

*HEPA filter standard with machine part numbers 900140, 900141, 900142 and 900143

● Standard ○ Optional

ATTIX 30



Technical Specifications

DESCRIPTION	UNIT	ATTIX 30	ATTIX 30 HEPA	ATTIX 30 AS/E	ATTIX 30 AS/E HEPA
Part Number	-	302004229	900130	302004230	900136
Voltage @ 60 Hz.	V	120	120	120	120
Power @ 60 Hz.	HP (W)	1.34 (1000)	1.34 (1000)	1.34 (1000)	1.34 (1000)
Air Flow, max.	CFM	135	135	135	135
Waterlift, max.	in. (mm) H ₂ O	92 (2337)	92 (2337)	92 (2337)	92 (2337)
Noise Level @ working distance of 3 m.	dB(A)	59	59	59	59
Container Capacity	gallons (L)	8 (30)	8 (30)	8 (30)	8 (30)
Dimensions	in x in x in (mm x mm x mm)	18 x 15 x 23 (457 x 381 x 584)	18 x 15 x 23 (457 x 381 x 584)	18 x 15 x 23 (457 x 381 x 584)	18 x 15 x 23 (457 x 381 x 584)
Shipping Weight	lb. (kg)	32 (14.5)	32 (14.5)	34 (15.4)	34 (15.4)
Electrical Approval	-	ETL-C	ETL-C	ETL-C	ETL-C

FEATURES

Feature	ATTIX 30	ATTIX 30 HEPA	ATTIX 30 AS/E	ATTIX 30 AS/E HEPA
Filter Cleaning System	Push&Clean	Push&Clean	Push&Clean	Push&Clean
SoftStart			●	●
Speed Control			●	●
Electric Tool Start			●	●
Accessory/Tool Storage	●	●	●	●
Black Antistatic Hose			●	●
Cable Wrap	●	●	●	●

ACCESSORIES

Accessory	Unit	ATTIX 30	ATTIX 30 HEPA	ATTIX 30 AS/E	ATTIX 30 AS/E HEPA
Hose	in. x ft.	● 1.5 x 10 (Part # 15805)	● 1.5 x 10 (Part # 15805)	● 1.25 x 16 (Part # 30657)	● 1.25 x 16 (Part # 30657)
Curved Wand, chrome		● (Part # 302000528)	● (Part # 302000528)	● (Part # 302000528)	● (Part # 302000528)
Extension Tube (2 Piece), chrome		● (Part # 302000529)	● (Part # 302000529)	● (Part # 302000529)	● (Part # 302000529)
Floor Nozzle, combination		● (Part # 302000477)	● (Part # 302000477)	● (Part # 302000477)	● (Part # 302000477)
Floor Nozzle, aluminium		○ (Part # 5147)	○ (Part # 5147)	○ (Part # 5147)	○ (Part # 5147)
Crevice Nozzle		● (Part # 6084)	● (Part # 6084)	● (Part # 6084)	● (Part # 6084)
Brush Nozzle		● (Part # 6086)	● (Part # 6086)	● (Part # 6086)	● (Part # 6086)
Universal Nozzle		● (Part # 14295)	● (Part # 14295)	● (Part # 14295)	● (Part # 14295)
Rubber Nozzle		○ (Part # 5067)	○ (Part # 5067)	○ (Part # 5067)	○ (Part # 5067)
Tool Adapter		○ (Part # 302000535)	○ (Part # 302000535)	● (Part # 302000535)	● (Part # 302000535)
Washable Filter		● Fleece (Part # 30200490)	● Fleece (Part # 30200490)	● Fleece (Part # 30200490)	● Fleece (Part # 30200490)
HEPA Filter		○ (Part # 302001095)	● (Part # 302001095)	○ (Part # 302001095)	○ (Part # 302001095)
1 Synthetic Dust Bag in Container		● (Part # 302004000)	● (Part # 302004000)	● (Part # 302004000)	● (Part # 302004000)
1 Plastic Bag in Container					

● Standard ○ Optional

ATTIX 50



Technical Specifications

DESCRIPTION	UNIT	ATTIX 50	ATTIX 50 HEPA	ATTIX 50 AS/E	ATTIX 50 AS/E HEPA
Part Number	-	302004233	900131	302004234	90051
Voltage @ 60 Hz.	V	120	120	120	120
Power @ 60 Hz.	HP (W)	1.34 (1000)	1.34 (1000)	1.34 (1000)	1.34 (1000)
Air Flow, max.	CFM	135	135	135	135
Waterlift, max.	in. (mm) H ₂ O	92 (2337)	92 (2337)	92 (2337)	92 (2337)
Noise Level @ working distance of 3 m.	dB(A)	59	59	59	59
Container Capacity	gallons (L)	12 (45.5)	12 (45.5)	12 (45.5)	12 (45.5)
Dimensions	in x in x in (mm x mm x mm)	18 x 15 x 30 (457 x 381 x 762)	18 x 15 x 30 (457 x 381 x 762)	18 x 15 x 30 (457 x 381 x 762)	18 x 15 x 30 (457 x 381 x 762)
Shipping Weight	lb. (kg)	38.5 (17.5)	38.5 (17.5)	38.5 (17.5)	38.5 (17.5)
Electrical Approval	-	ETL-C	ETL-C	ETL-C	ETL-C

FEATURES

	ATTIX 50	ATTIX 50 HEPA	ATTIX 50 AS/E	ATTIX 50 AS/E HEPA
Filter Cleaning System	Push&Clean	Push&Clean	Push&Clean	Push&Clean
SoftStart	●	●	●	●
Speed Control			●	●
Electric Tool Start			●	●
Accessory/Tool Storage	●	●	●	●
Antistatic Hose				
Cable Wrap	●	●	●	●

ACCESSORIES

	UNIT	ATTIX 50	ATTIX 50 HEPA	ATTIX 50 AS/E	ATTIX 50 AS/E HEPA
Hose	in. x ft.	● 1.5 x 10 (Part # 15805)	● 1.5 x 10 (Part # 15805)	● 1.5 x 10 (Part # 15805)	● 1.5 x 10 (Part # 15805)
Curved Wand		● Chrome (Part # 302000528)	● Chrome (Part # 302000528)	● Stainless Steel (Part # 46691)	● Stainless Steel (Part # 46691)
Extension Tube (2 Piece)		● Chrome (Part # 302000529)	● Chrome (Part # 302000529)	● Stainless Steel (Part # 15546)	● Stainless Steel (Part # 15546)
Floor Nozzle, combination		● (Part # 302000477)	● (Part # 302000477)	○ (Part # 302000477)	○ (Part # 302000477)
Floor Nozzle, aluminium		○ (Part # 5147)	○ (Part # 5147)	● (Part # 5147)	● (Part # 5147)
Crevice Nozzle		● (Part # 6084)	● (Part # 6084)	○ (Part # 6084)	○ (Part # 6084)
Brush Nozzle		● (Part # 6086)	● (Part # 6086)	○ (Part # 6086)	○ (Part # 6086)
Universal Nozzle		● (Part # 14295)	● (Part # 14295)	○ (Part # 14295)	○ (Part # 14295)
Rubber Nozzle		○ (Part # 5067)	○ (Part # 5067)	○ (Part # 5067)	○ (Part # 5067)
Tool Adapter		○ (Part # 302000535)	○ (Part # 302000535)	○ (Part # 302000535)	○ (Part # 302000535)
Washable Filter		● Fleece (Part # 30200490)		● Fleece (Part # 30200490)	● Fleece (Part # 30200490)
HEPA Filter		○ (Part # 302001095)	● (Part # 302001095)	○ (Part # 302001095)	○ (Part # 302001095)
1 Synthetic Dust Bag in Container		● (Part # 302004004)	● (Part # 302004004)	● (Part # 302004004)	● (Part # 302004004)
1 Plastic Bag in Container					
Pneumatic Tool Start				○ (Part # 107400394)	○ (Part # 107400394)

● Standard ○ Optional

ATTIX 19



Technical Specifications

DESCRIPTION	UNIT	ATTIX 19 AS/E XC	ATTIX 19 AS/E HEPA
Part Number	-	107408932	900138
Voltage @ 60 Hz.	V	120	120
Power @ 60 Hz.	HP (W)	1.6 (1200)	1.6 (1200)
Air Flow, max.	CFM	120	120
Waterlift, max.	in. (mm) H ₂ O	105 (2667)	105 (2667)
Noise Level @ working distance of 3 m.	d(B)A	57	57
Container Capacity	gallons (L)	19 (72)	19 (72)
Dimensions	in x in x in (mm x mm x mm)	24 x 23 x 38 (609 x 584 x 965)	24 x 23 x 38 (609 x 584 x 965)
Shipping Weight	lb. (kg)	85 (38.5)	85 (38.5)
Electrical Approval	-	-	-

FEATURES

	ATTIX 19 AS/E XC	ATTIX 19 AS/E HEPA
Filter Cleaning System	XtremeClean	XtremeClean
SoftStart	●	●
Speed Control	●	●
Electric Tool Start	●	●
Accessory/Tool Storage	●	●
Antistatic Hose	●	●
Cable Wrap	●	●

ACCESSORIES

	ATTIX 19 AS/E XC	ATTIX 19 AS/E HEPA
Hose	● 1.25 x 16 (Part # 30657)	● 1.25 x 16 (Part # 30657)
Discharge Hose, PVC lay-flat (L) (ft.)		
Curved Wand, stainless steel	● (Part # 46691)	● (Part # 46691)
Extension Tube (2 Piece), stainless steel	● (Part # 107408074)	● (Part # 107408074)
Floor Nozzle, combination	○ (Part # 302000477)	○ (Part # 302000477)
Floor Nozzle, aluminium	● (Part # 5147)	● (Part # 5147)
Crevice Nozzle	○ (Part # 6084)	○ (Part # 6084)
Rubber Nozzle	○ (Part # 5067)	○ (Part # 5067)
Tool Adapter	○ (Part # 302000535)	○ (Part # 302000535)
Washable Filter, fleece		
HEPA Filter	○ (Part # 900134)	○ (Part # 900134)
Synthetic Dust Bag in Container	○ (Part # 302002892)	○ (Part # 302002892)
Plastic Bag in Container	● (Part # 302001480)	● (Part # 302001480)

● Standard ○ Optional

ATTIX 19 AE Flood Sucker

- versatile, 3 mode functionality sump pump vacuum

Collect and discharge nearly one gallon of water per second with the ATTIX 19 AE Flood Sucker. It is the ideal solution for plant emergency response clean-up and wet applications such as recycling water used to wash fruits and vegetables in a food processing facility.

The ultimate sump pump vacuum, it separates solids into a stainless-steel basket inside the canister while liquids are simultaneously discharged through a fire hose. The powerful discharge pump expels water up to 30 feet vertically and 150 feet horizontally. It can be operated in three modes—vacuum only, pump only, or vacuum and pump.

Where ordinary sump pumps leave up to 1.5 inches of liquid on the ground, the Flood Sucker completely removes liquids, leaving a dry surface behind.

Standard Features:

- Accessory Storage
- On-board Power Receptacle
- Rubber Cable with Wrap Hook
- Soft Start
- Tool Deposit
- Power Regulator

Technical Specifications

DESCRIPTION	UNIT	ATTIX 19 AE
Part Number	-	M60004
Voltage @ 60 Hz.	V	120
Power @ 60 Hz., vacuum	HP (W)	1.34 (1000)
Power @ 60 Hz., sump pump	HP (W)	1.02 (760)
Air Flow, max.	CFM	140
Waterlift, max.	in. (mm) H ₂ O	105 (2667)
Noise Level @ working distance of 3 m.	db(A)	57
Container Capacity	gallons (L)	19 (72)
Dimensions	in x in x in (mm x mm x mm)	24 x 23 x 38 (609 x 584 x 965)
Shipping Weight	lb. (kg)	97 (44)
Electrical Approval	-	-

ACCESSORIES

Hose	in. x ft.	● 1.5 x 13 (Part # 15365)
Discharge Hose, PVC lay-flat (L) (ft.)		● 25 (Part # 100088)
Curved Wand, stainless steel		● (Part # 46691)
Extension Tube (2 Piece), stainless steel		● (Part # 107408074)
Floor Nozzle, combination		○ (Part # 302000477)
Floor Nozzle, aluminium		○ (Part # 5147)
Industrial Squeegee		● (Part # 5149)
Crevice Nozzle		○ (Part # 6084)
Rubber Nozzle		○ (Part # 5067)
Tool Adapter		○ (Part # 302000535)

● Standard ○ Optional



ATTIX 33 & 44



Technical Specifications

DESCRIPTION	UNIT	ATTIX 33-01 IC	ATTIX 33-21 IC	ATTIX 44-21 IC
Part Number, Standard Machine	-	107412120	107412122	107412125
Part Number, HEPA Machine	-	900146	900147	900148
Power @ 60 Hz	HP (W)	1.34 (1000)	1.2 (890)	1.2 (890)
Power @ 60 Hz - tool start	HP (W)	-	0.74 (550)	0.74 (550)
Waterlift, max.	in. (mm) H ₂ O	92 (2337)	92 (2337)	92 (2337)
Airflow, max.	CFM (L/min)	148 (4190)	148 (4190)	148 (4190)
Current, max.	amps	8.3	7.4	7.4
Current, max - tool start	amps	-	4.6	4.6
Container Capacity, dry	gal. (L)	8 (30)	8 (30)	11 (42)
Container Capacity, wet	gal. (L)	5.2 (19.5)	5.2 (19.5)	7.8 (29.5)
Dimensions (L x W x H)	in. x in. x in. (mm x mm x mm)	32 x 16 x 25 (800 x 400 x 640)	32 x 16 x 25 (800 x 400 x 640)	32 x 16 x 28 (800 x 400 x 720)
Weight, shipping	lbs. (kg)	45 (20.5)	45 (20.5)	49 (22)
Hose/Tube Diameter	mm	32	32	32
Noise Level @ working distance of 3m	dB(A)	69	69	69
Electrical Approval	-	ETL-C	ETL-C	ETL-C

FEATURES

	ATTIX 33-01 IC	ATTIX 33-21 IC	ATTIX 44-21 IC
Filter Cleaning System	InfiniClean	InfiniClean	InfiniClean
Soft Start	●	●	●
Speed Control	●	●	●
Automatic Tool Start		●	●
Accessory/Tool Storage	●	●	●
Antistatic Hose		●	●
Cable Wrap	●	●	●

ACCESSORIES

	ATTIX 33-01 IC	ATTIX 33-21 IC	ATTIX 44-21 IC
Washable PTFE Main Filter	● (Part # 107413540)	● (Part # 107431540)	● (Part # 107431540)
HEPA Filter Cover Kit	○ (Part # 107413542)	○ (Part # 107413542)	○ (Part # 107413542)
Replacement HEPA Filter	○ (Part # 107413555)	○ (Part # 107413555)	○ (Part # 107413555)
Plastic Disposal Bag	● (Part # 107417821)	● (Part # 107417821)	● (Part # 107417821)
Replacement Hose with Hand Tube (Gray)	● (Part # 107409976)		
Replacement A/S Hose (Red)	○ (Part # 107413543)	● (Part # 107413543)	● (Part # 107413543)
Replacement Tool Adapter	● (Part # 107409977)	● (Part # 302000535)	● (Part # 302000535)
Optional Tool box	○ (Part # 107413554)	○ (Part # 107413554)	○ (Part # 107413554)
Tool box Mounting Kit	○ (Part # 107413551)	○ (Part # 107413551)	○ (Part # 107413551)
12" Floor Nozzle	● (Part # 302002331)	● (Part # 302002331)	● (Part # 302002331)
8" Crevice Nozzle	● (Part # 29541)	● (Part # 29541)	● (Part # 29541)

Specifications and details are subject to change without prior notice.

● Standard ○ Optional

A Complete Line of Industrial Vacuum Cleaners

Customers have access to Nilfisk Industrial Vacuums entire line of solutions—from portable vacuums to process integrated stationary units to complete central vacuum systems.

Nilfisk vacuum cleaners give you the power to clean faster and more efficiently so you can cut costs, increase production, improve product quality, ensure worker safety, and even minimize your risks.



Combustible Dust Housekeeping



Production Line Cleaning



Cleanroom Maintenance



Hot Oven Cleaning

Safe Choice Commitment

At Nilfisk Industrial Vacuums we understand that you face many risks each day, just by operating your business. That is why Nilfisk is dedicated to helping you make smart choices to keep your facility and your workers safe. Our team of experts is ready to tackle any cleaning challenge – because in a world full of risk, you have to make safe choices.

We are committed to being that safe choice. To learn more visit nilfiskindustrialvacuums.com.